

Surface Mount Installation Instructions  
Decor, Expressions & QuickShip Units



Unpacking Your VisionArt Unit:

- a. Place shipping container on flat surface.
- b. Examine outside of box for any apparent damage or punctures. If any are found, report it immediately to VisionArt Galleries. 866-432-4353
- c. Remove top of shipping container.
- d. Remove Accessory Box, whose contents include gloves, screws, and fasteners.
- e. Gently remove the wrapped unit and place on floor with picture frame up. Carefully unwrap protective plastic and **do not use a knife** to avoid damaging the frame or canvas.

Damage may occur if the VisionArt unit is operated at an angle or lying flat. VisionArt must ONLY be operated in the upright position.

Limits are preset at factory. Please DO NOT attempt to adjust limits; doing so will VOID your warranty.

Please review instructions entirely before proceeding with installation.

## In the Box

- VisionArt Unit
- Wall Cleat
- Gloves
- 4 Wood Screws
- 2 Fastener
- 2 Side Returns



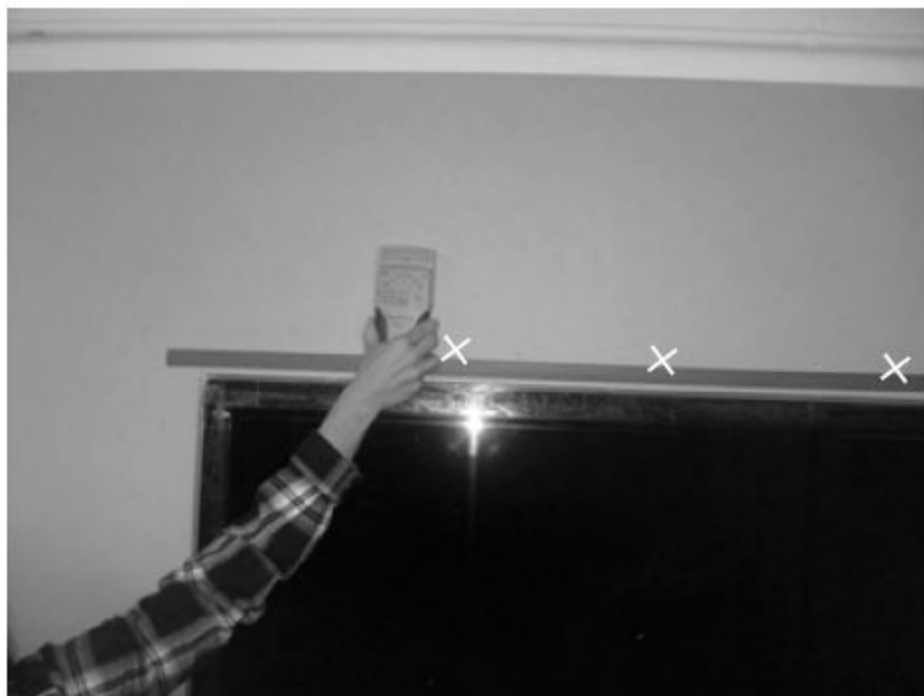
## Tools Needed

- Drill Motor with Philips Bit
- Straight Edge
- 3/8" Wrench
- Tape Measure
- 3/16" Drill Bit
- Level
- Blue Tape
- Stud Finder
- Marking Pen
- Square



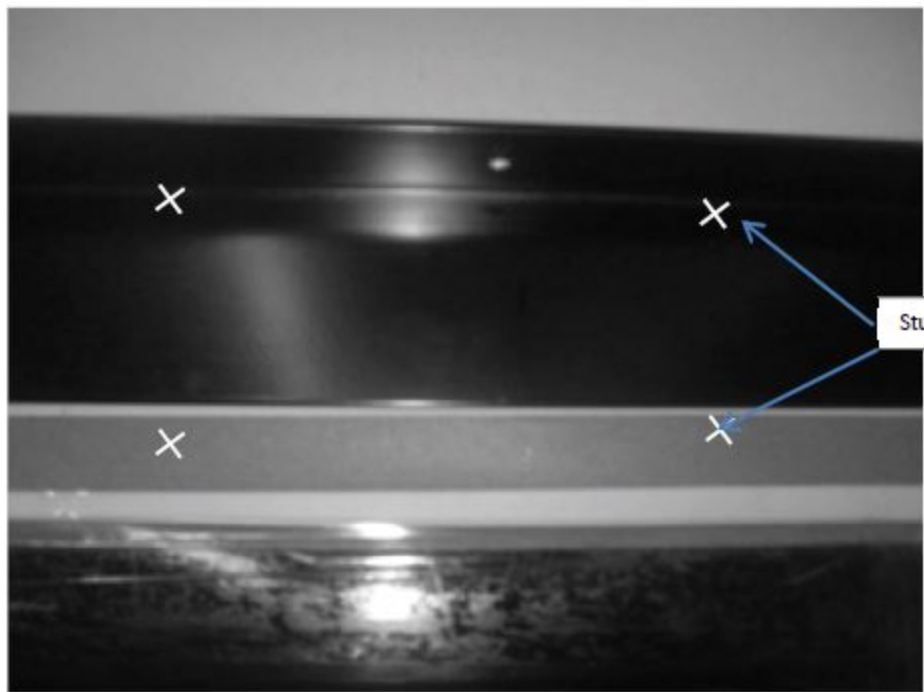
### Step 1:

With flat panel TV installed on wall, locate studs and mark them with blue tape.



### Step 2: Installing the Wall Cleat.

a) Center the bar above the TV and transfer the stud marks under the top lip of the cleat.



## Installing the Wall Cleat (Cont.)

b) Drill  $3/16$ " holes where you marked the studs



c) Measure  $3 \frac{1}{4}$ " from top of TV.





d) Level and screw the cleat to wall at the 3 ¼" mark using the provided screws



### Step 3: Hanging your VisionArt Unit

Align and hang the VisionArt unit on to the Wall Cleat; adjust (left/right/forward/back) as needed and secure in place with supplied fastener.



#### Step 4: Installing your Side Returns

Measure from the wall to the back of the decorative frame to determine the size of the returns. Record measurement.

Measurement \_\_\_\_\_



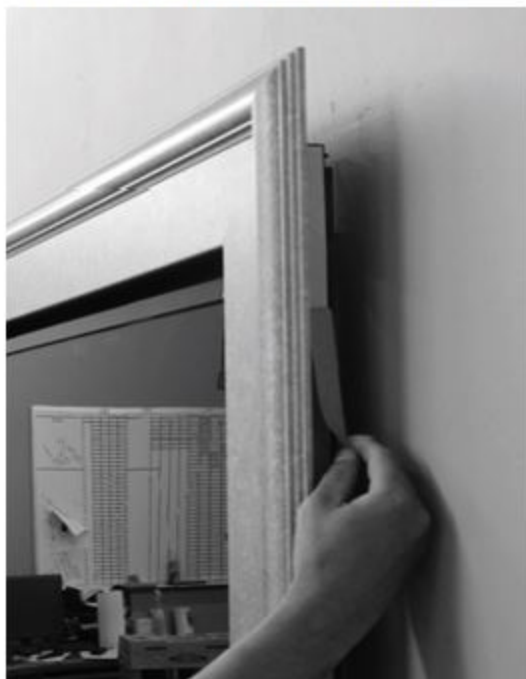
#### Step 5:

USING THE MEASUREMENT FROM STEP 4, trim the side returns to size.



**Step 6:**

Adhere the side returns with the pre-applied double-sided tape to the VisionArt side brackets.



We are committed to quality craftsmanship and stand behind the value of our products! Please take the time to give us your feedback at [www.visionartgalleries.com/feedback](http://www.visionartgalleries.com/feedback); we'd love to hear from you!

*Enjoy Your  
Vision Art!*